



pbha.org

SUMMER URBAN PROGRAM

a phillips brooks house association program



Our Mission

The Phillips Brooks House Association (PBHA) strives for social justice. PBHA's Summer Urban Program (SUP) builds positive relationships with youth, families, and community partners to ensure that youth build the social, emotional, and academic skills needed to define, access, and achieve their own success in and beyond PBHA.



About PBHA

The Phillips Brooks House Association (PBHA) is a student-led, staff supported, community-based nonprofit organization. PBHA is the umbrella for 80+ student-directed programs that strive for change in Boston and Cambridge neighborhoods. By utilizing student initiative and working in close collaboration with constituents, our programs meet community needs in innovative ways.

Summer Urban Program

PBHA's Summer Urban Program (SUP) is a network of 10 day-camps and one evening ESL camp located throughout Boston and Cambridge. Together the camps serve 800+ low-income youth, and 90 local teens who work, for seven weeks of programming at the affordable rate of \$135 per camper. Campers spend mornings participating in academic enrichment activities and go on exploratory or recreational field trips in the afternoon. Campers spend mornings participating in academic enrichment activities and go on exploratory or recreational field trips in the afternoon.



SUP by the Numbers...

873

youth served
(K-12)

200

senior and junior
staff

75

hours of
classroom instruction



Our Youth

SUP's youth and families come from all over Dorchester, Roxbury, South End, South Boston, Mission Hill, Chinatown, and Cambridge communities. Recent immigrant teens from Greater Boston enroll in our Refugee Youth Summer Enrichment, and Native youth from across Boston attend our Native American Youth Enrichment Program.



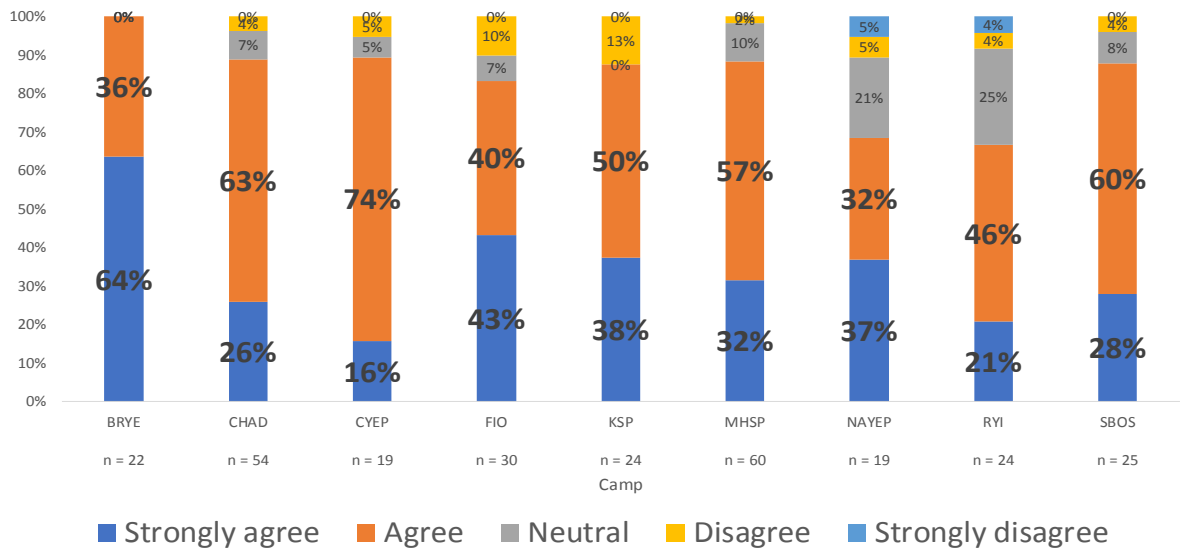
CAMPERS

PBHA's youth programs strive to meet the following long term outcomes:

- 1. Academic...** use the necessary competencies and beliefs to achieve success in school.
- 2. Community Engagement...** have leadership, feel belonging, and show responsibility in their communities.
- 3. Future...** take advantage of opportunities toward established goals and make plans of hope and determination.
- 4. Self-Worth....** use positive social skills and self-awareness to make healthy life choices.
- 5. Support System...** access resources and support through positive relationships with a network of adults, peers, institutions, and family.



SUP 2018 End of Camp Family Survey



SUP “sparked” growth, learning, and perseverance: 7 out of 9 camp sites had 80% or more families agree/strongly agree with the following statement, “Because of camp my child: is willing to try new approaches to problems when their first approach doesn’t work.”

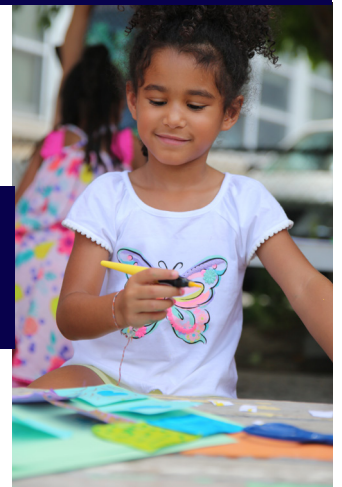
What do families have to say about SUP?



I appreciated “the positive impact of learning and growth” and that “my daughter got to see things out of the city and learn new things.” - SUP parent

In 6 out of 9 camps, families of 90% of youth agree/strongly agree that “Because of camp my child: likes to learn about their own identity and takes pride in it.”

“My kids have learned so much from the program especially in their positive attitudes and motivation.” - SUP parent



4:1 staff to student ratio

45% returning campers

72% of families earn <\$42K

JUNIOR COUNSELORS

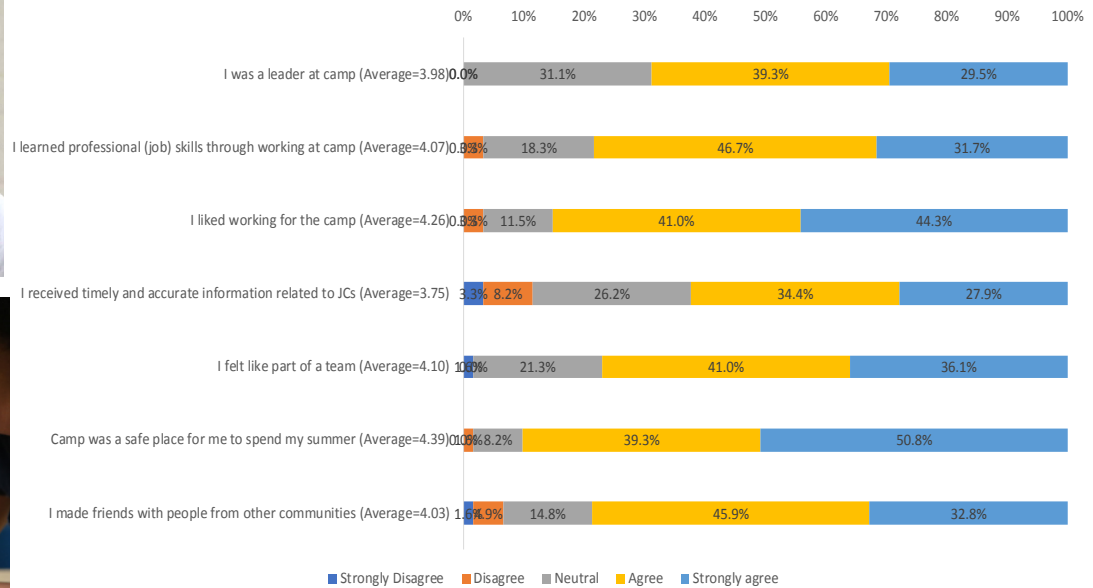


"What I liked the most was being able to learn from the people around me. This job provided me a safe place where I could go and learn about other people and their backgrounds. It also provided me with the opportunity of being able to learn from other people. People from my camp are very enthusiastic and supportive."
- SUP Junior Counselor

The Leaders! program provides 95 teens from Boston and Cambridge with full-time teaching and mentoring for 10 weeks during the summer and engages 25 of those same teens in intensive college access, mentoring, and leadership development during the school year.



SUP 2018 Junior Counselor General Experience Survey



Engaging Youth at RYSE

American Dreams
 Living in the dark
 Finding the sunshine
 Great immigration

A colorful society
 English is our obstacle
 Strong spirit is our property

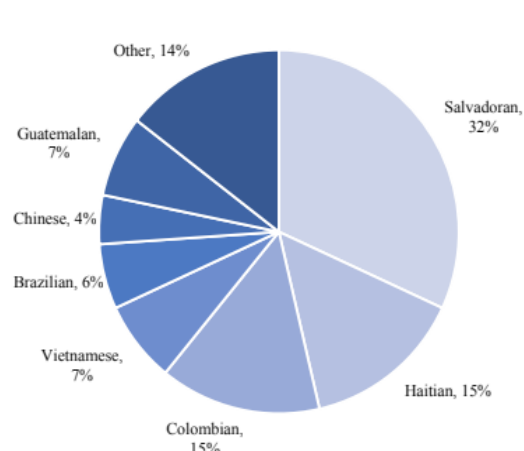
Don't look at our skin
 Just look at what we can do!

We can change American
 By our Brain
 By our spirit
 And by our heart

-RYSE SUP participant

What is RYSE?
 RYSE provides affordable, intensive ESL instruction and college preparation to low-income recent immigrant and refugee high school students.

Students' Nationality Composition



Junior staff (15-19): 77

76% of JCs returned to SUP

JC returners avg. 7.7 semesters

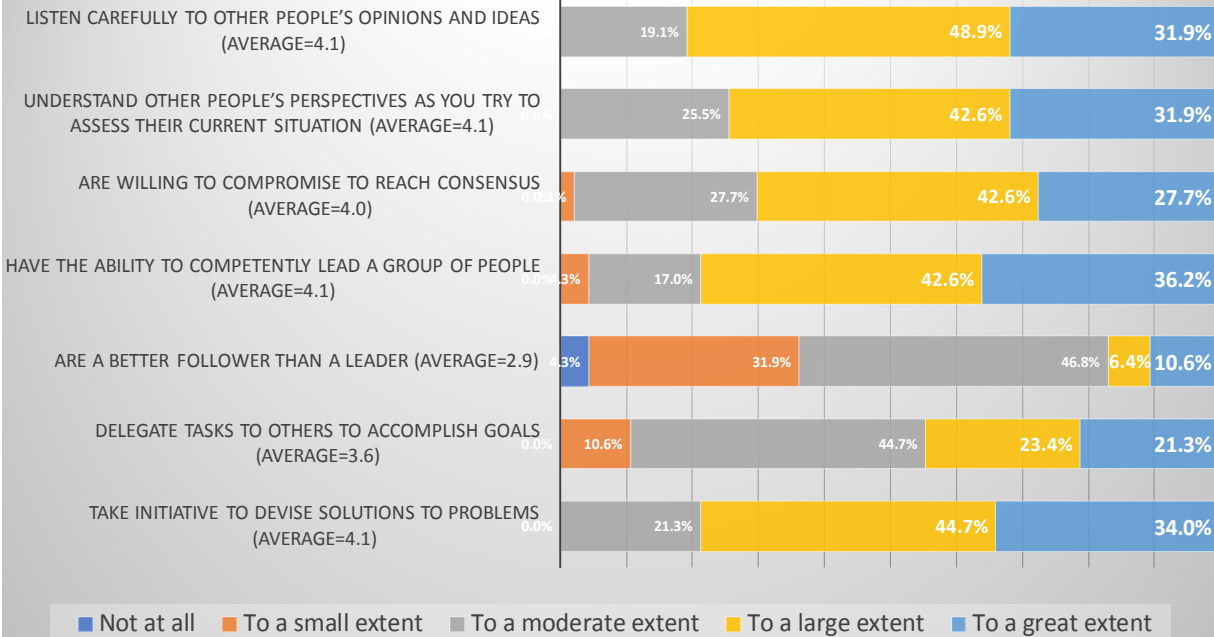
Senior Counselors & Directors

Senior counselors (SCs) & directors are college student staff. Senior counselors oversee and teach a class of 10 children with a high school junior counselor. Directors, much like a school principal, oversee the day-to-day operations of camp and are responsible for organizing programming during the Spring semester in preparation for the summer.



“Don’t underestimate it when they tell you it’ll be the hardest summer you’ll ever love. It’ll test you. It’ll try you, make you reevaluate every aspect of yourself, of your life, and the world. But it’ll rebuild you, remind of you of the importance of connection with people, patience, understanding, stepping out of your comfort zone. It’ll prepare you for anything you choose to do.”
 -SUP Senior Counselor

SUP Staff Survey - End of Summer: To what extent do you believe that you...



Staff by the Numbers:

- 282 applicants for senior counselor
- 111 full time staff with 16 part time support staff
- (30%) returners from SUP



SUMMER URBAN PROGRAM

a philips brooks house association program